

Floor tiles

 **Fortelock**

Quickly
and easily

Content

| | |
|----------------------------------|----|
| Fortemix | 3 |
| Fortelock flooring | 5 |
| Production and warehousing | 7 |
| Business premises | 9 |
| Sports and fitness | 11 |
| Car and tire service | 13 |
| Garages and workshops | 15 |
| Electrostatic facilities | 17 |
| Industry | 19 |
| Industry Ultra | 20 |
| XL | 21 |
| Invisible | 22 |
| Business | 23 |
| ESD | 25 |
| XL ESD | 26 |
| Accessories | 27 |
| Fixation and bonding, cleaners | 28 |
| Print Granit, Print Custom | 29 |
| Installation, cleaning, painting | 30 |
| Services, contact | 31 |

Our philosophy is to protect surroundings for future generations. That is why we produce technically sophisticated patented products which renovate floors without demolition. In addition, thanks to the use of waste, **we save over 3,000,000 kg of plastic from incineration** or landfill every year.



Not only will we prevent plastic from being dumped into landfills, but we will save 5 496 000 kg CO₂, equivalent emissions of almost 1,000 cars* and in addition we save 725,000,000 litres of water every year.**

Renovating the floor with PVC tiles will also save 80% of emissions compared to a new concrete floor. All our tiles are recyclable, a minimum waste and emission is generated during production, and we also buy old products. We crush production scrap on our own crushers. This way, no defective pieces have to leave the factory and are soon back in production. In addition, we are able to recycle our products even after the end of their service life, which is very long. Our factory was also mainly built from used materials. Most of our halls and offices are built out of old structures, used insulation and panels.

The Fortemix portfolio includes a group of building materials and chemicals (Fortedur, Fornivel and others) and the brands Fortelock and Ekoternit.

* Calculated from emissions of 2.1 kg CO₂ eq. / kg of primary plastic saved after deducting recycling and processing emissions 0.268 kg CO₂ eq./kg
** Calculated from the water consumed by producing 242 l / kg of primary plastic after deducting recycling and processing emissions 0.268 kg CO₂ eq./kg

A family business which hasn't been focusing only on profit for 30 years.

Every business must be profitable in order to survive. We also believe that companies and their people have more potential and capabilities than just generating profit. Companies should go above and beyond and take more responsibility for their employees and the entire planet.

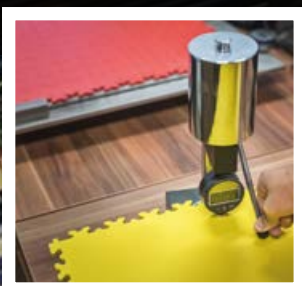
Abrasive and cement mixture Fortedur production

- Automatic line for mixing dry mixtures
- Capacity >130 000 tones



Our own development department

- Locktest developed by us
- Test injection moulding machine
- Our own climate chamber
- Size measurement with an accuracy of 0.001 mm in 6 points



Production of plastic products Fortelock and Ekoternit

- Highly modern presses for the production of tiles and roofs
- Annual capacity over 250,000 m²
- Modification and preparation of own granules and regranulates
- Our own printing and varnishing line



Sales and customer service department

Trusted by customers from more than 49 countries



It means to us that ...

... we are approaching waste-free production and buying out old products.

We crush production scrap on our own crushers. This way, no defective pieces have to leave the factory and are soon back in production. In addition, we are able to recycle our products even after the end of their service life, which is very long

... we transform the old into the new.

We save over 3,000,000 kg of plastic from incineration or landfill every year.

... we donate more than 1,5% of sales annually to help those in need (over CZK 10 million in total so far).

Not everyone is fortunate. Since we usually are the obligation to share at least financially with those who do not have so much. That is why we support, for example, Hospice Ondrášek, inclusive education of People in Need and Charity, The whole Czech Republic reads to children, Centrum pant, Memory of the nation, and server for teaching history Modern history etc. The amount of the donation is up to our employees.

... we mainly build from used materials.

Most of our halls and offices are built out of old structures, used insulation and panels.

...Not only will we prevent plastic from being dumped into landfills, but we will save 5,496,000 kg of CO₂, equivalent emissions of almost 1,000 cars and in addition we save 725,000,000 litres of water every year.

Fortelock PVC tiles

... quickly and easily

The Fortelock system consists of interconnected PVC tiles that can be installed on top of any kind of new and old sub-floor.



12 year warranty
25 years service life



High load:
Up to 520 kg/cm²



Recycling:
100% recyclable, ECO variants made out of recycled material



Maintenance and resistance:
Easy to maintain and resistant to chemicals



Anti - slip and safety:
Most tiles have R10 anti - slip and thus protect workers from accidents



Speed:
4 x faster than common floor repairs therefore there is no need to limit operation



Unique design:
We developed a special snake skin pattern which has a unique design and is easier to clean



Quiet and warm:
It reduces noise, vibrations and cold ensuring better work conditions



Strong connection:
Durable locking system withstands weight of up to 463 kg



Sub-floor:
May be used on top of any kind of sub-floor therefore saves up to 80% of floor renovation time



Easy to repair:
Simply replace only one tile



Floor moldings, ramps and corners:
Everything is custom made in the same shades as the floor



Varnishing and print:
Varnishing and customer print option

Production and warehousing

- High mechanical and chemical resistance for industrial loads
- Fortelock Industry floor can withstand a point load of up to 520 kg per 1 cm²
- Can be assembled in parts outside the hours of operation
- Easy maintenance and surface cleaning
- Anti-slip surface increases safety
- The floor is suitable for areas with forklift operation
- Highlight work zones with coloured tiles
- Minimum requirements for sub-floor preparation – up to 80% time SAVING

“The floor is easy to repair and it is immediately walkable. We don't have to stop operation because of that. It is unthinkable for us to stop the operation even for 3-4 days.

”
Floordesign, Czech Republic

For heavy load equipment > **Industry Ultra** (page 20)

For uneven and damaged sub-floor > **Industry** (page 19)

For seamless appearance > **Invisible** (page 22)

Tiles: **Industry Ultra**

Pattern: **Skin**

Colour: **Grey, Yellow**

Business premises

- Installation is easy, you can handle it overnight without limiting operation
- The tiles can be laid on virtually any surface without complicated preparation
- PVC material is quick and easy to maintain and can be disinfected
- Your company logo can be printed on selected tiles
- In case of relocation the tiles can be disassembled, transported and reused
- Tiles can be cleaned mechanically and by hand

The daily 13-hour operation in our shop has put a lot of strain on the original floor. Many of the ceramic tiles were already cracked, which caused a problem when handling goods and it was not safe for customers. We couldn't afford to close the shop for a few weeks, so we opted for Business tiles. Our shop now looks like new. I can only recommend it.

Shopping mall, Germany

| | |
|---|-----------|
| For areas with light load traffic > XL | (page 21) |
| For areas with higher loads and traffic > Industry | (page 19) |
| For seamless appearance > Invisible | (page 22) |
| For spaces with a decorative look > Business | (page 23) |
| For uneven and damaged sub-floor > Industry | (page 19) |

Tiles: **Business**
 Colour: **Sauda hidden treasure G002**
 Seam: **Graphite**

Sport and fitness

- The floor can withstand the fall of a dumbbell and long-term load of exercise equipment without damage
- Installation is easy, can be handled overnight without limiting operation
- PVC material is easily disinfected and maintains a hygienically clean environment
- The floor is pleasant to the touch and you do not feel cold when exercising on the floor
- The tiles can be disassembled at any time and reused in a new space
- Easily organized exercise areas thanks to a wide range of colours
- Print the logo of your fitness studio on selected tiles

We used the heavy load tile option because in our gym we are mainly focused on heavy weight lifting. The floor takes a beating and yet in its third year it still looks great. We are extremely satisfied with that. In addition, it is easy to maintain. Guys sweat a lot here and the sweat can be washed away really quickly and easily. Also when compared to the competition they were clearly the cheapest. Another advantage is the fact that it is a Czech product.

Fitness centre, Czech Republic

For heavy exercise equipment and weights > **Industry** (page 19)

For light equipment and gyms > **XL** (page 21)

For seamless appearance > **Invisible** (page 22)

For spaces with a decorative look > **Business** (page 23)

Tiles: **Industry**

Pattern: **Skin**

Colour: **Graphite**

Car and tire service

- Tile can withstand high mechanical stress and technical fluids
- Easily installed in parts outside the operating hours
- Anti-slip treads to increase adhesion when vehicles approach the ramp
- Coloured tiles can be used to highlight dangerous zones under jacks
- The insulation reduces noise and makes working under the car more pleasant

It is really just like a puzzle. There was no need to call installers. We were able to handle it by ourselves. No need to glue. We just put it together the way we liked it.

**Auto Kelly a.s.,
Czech republic**

For heavy load in the workshop > **Industry**

(page 19)

For seamless appearance > **Invisible**

(page 22)

Tiles: **Industry**

Pattern: **Skin**

Colour: **Graphite**

Garages and workshops

- Easy installation without gluing
- High mechanical and chemical resistance
- Premium look for your garage at an affordable price
- The colour combination of tiles will make your unique car stand out
- Easy maintenance and the possibility of disassembly and replacement of tiles
- The insulation of the tiles makes working on the floor more enjoyable

“Cleaning and treatment is easier, the tiles also reduce noise, are anti-slippery and resistant to heavier loads, do not absorb oil which is sometimes on the floor.”

”
End client, Czech Republic

For heavy handling machinery > **Industry**

(page 19)

For seamless look > **Invisible**

(page 22)

Tiles: **Industry**

Pattern: **Diamond**

Colour: **Black, Yellow**

Electrostatic facilities (ESD)

- Fortelock ESD tiles prevent electrostatic discharges
- Installation is easy, you can do it yourself overnight without limiting operation
- The tiles can be laid on virtually any previous surface without complicated adjustments
- Especially suitable for areas with the production of electrical and automotive components, as well as areas with a risk of explosion, electrical substations, data centres, laboratories, pharmaceutical centres and other special facilities
- Excellent chemical resistance, easy maintenance and disinfection



Thanks to ESD tiles we have solved a problem we have had for a long time with electrical discharges. They were destroying our delicate electronics, which were time and money consuming to repair.

”

Manufacture of electrical components, Netherlands

Areas with electrostatic discharges > ESD

(page 25)

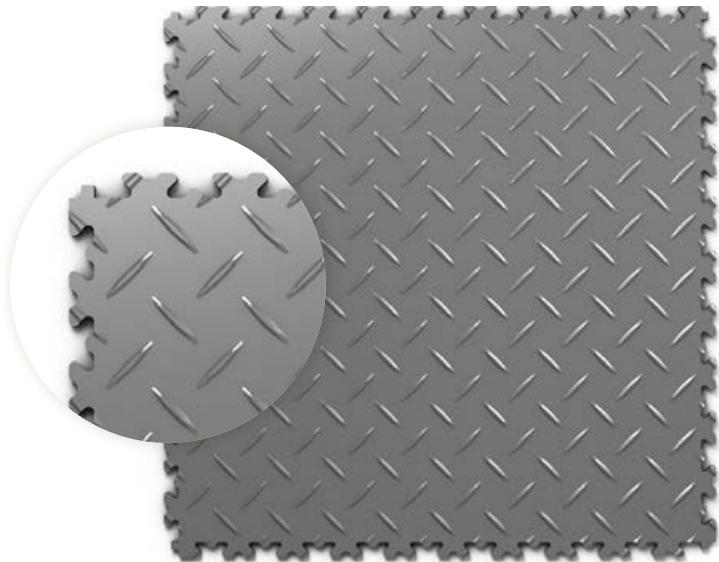
Tiles: **XL ESD**

Pattern: **Snake Skin**

Colour: **Black, Grey**

Industry

| | |
|-------------|------------------|
| Dimensions: | 510,5 x 510,5 mm |
| Thickness: | 7 mm |
| Weight: | 2,3 kg |
| Lock: | visible |



- The **Industry** line is designed for the **heavy industrial loads** including forklifts and pallet trucks
- Suitable for areas with **heavy point or dynamic load (warehouses, garages, fitness centres, police and fire stations)**
- It is characterized by its quick and easy installation
- The tiles can be assembled in sections without interrupting operations
- If necessary, individual tiles can be easily replaced with new ones without having to disassemble the entire floor
- The tile is resistant to chemicals and abrasion
- **Composition:** highly durable homogeneous 100% PVC (100% recyclable)
- It stands out for making the floor easy to clean and maintain
- Also available in ECO variant made of recycled material
- **Resistant lock system, 12 years warranty, 25 years service life**

Colours:

ECO Black ECO Grey ECO Light Grey ECO Blue ECO Brown

Black Graphite Grey Blue Green Yellow Rosso Red

Pattern:

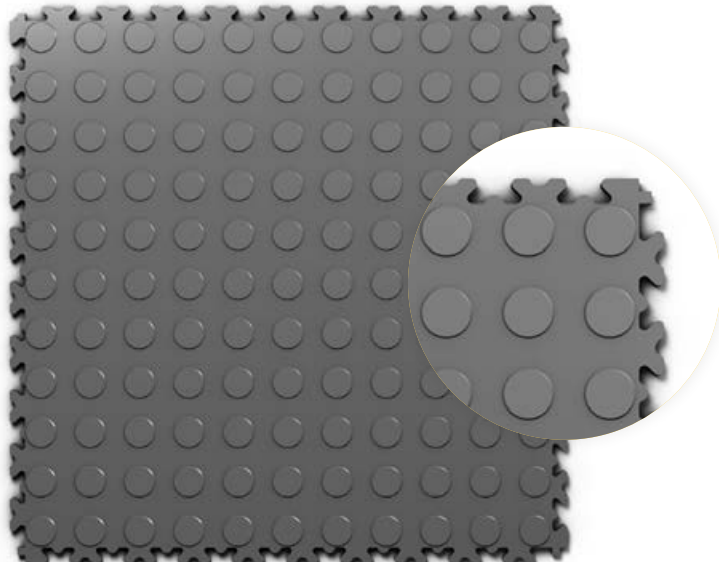
Diamond Coin Skin

Accessories and service

Ramps and Corners IndustryFloor moldingDemarcation Strips IndustryVarnishingCustomer printCleaners

Industry Ultra

| | |
|-------------|------------------|
| Dimensions: | 510,5 x 510,5 mm |
| Thickness: | 10 mm |
| Weight: | 3,1 kg |
| Lock: | visible |



- The **Industry Ultra** line is designed for floors under extreme stress and the **heaviest industrial load**
- The tiles can withstand the load of pallet trucks and forklifts up to 6600 kg without the need for fixation (at 20 °C)
- It is particularly ideal for spaces with a high point or dynamic load, especially **warehouse halls, industrial production, logistics centres**
- The tiles can be assembled in sections without interrupting operations
- The tile is resistant to chemicals and abrasion
- **Composition:** highly durable homogeneous 100% PVC (100% recyclable)
- It stands out for making the floor easy to clean and maintain
- Also available in ECO variant made of recycled material
- **Resistant lock system, 12 years warranty, 25 years service life**

Colours:

ECO Black ECO Grey ECO Light Grey ECO Blue ECO Brown

Black Graphite Grey Blue Green Yellow Rosso Red

Pattern:

Diamond Coin Skin

Tip:

Want keep your floor looking like new? Clean it regularly with Forteclean Daily Cleaner. This specially developed cleaner keeps floors as good as new. Its tough cleaning power works even on greasy deposits without leaving residue or streaks.

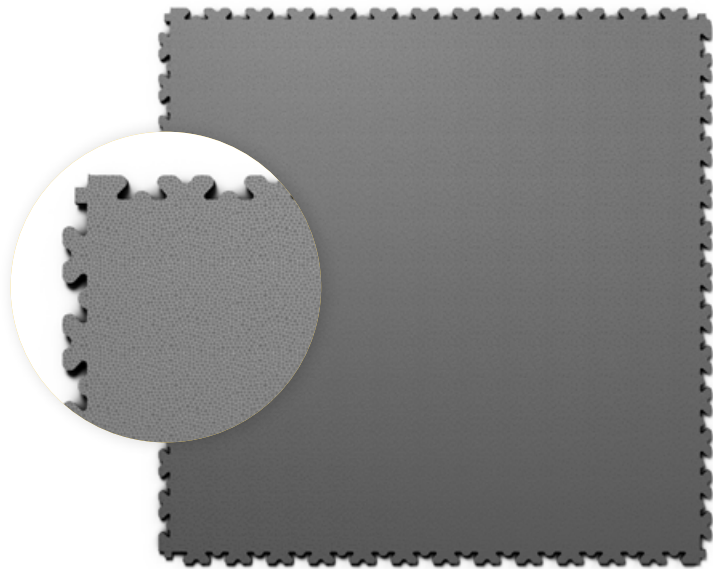


Accessories

Ramps and Corners Industry UltraFloor moldingDemarcation Strips Industry UltraCleaners

XL

| | |
|-------------|--------------|
| Dimensions: | 653 x 653 mm |
| Thickness: | 4 mm |
| Weight: | 2,3 kg |
| Lock: | visible |



- The **XL** series is designed for areas with a **medium load and flat surface**
- Great for **cellars, garages, public spaces and shops**
- Unique snakeskin pattern with reflections and easier cleaning
- Large-format tiles (2,5 pieces of tiles cover 1 m²)
- The tiles can be printed with ready-made patterns or your own graphics
- **Composition:** highly durable homogeneous 100% PVC (100% recyclable)
- Available also in ECO variant made out of recycled material
- It stands out for making the floor easy to clean and maintain
- **Resistant lock system, 12 years warranty, 25 years service life**

Colours:

ECO Black ECO Grey ECO Light Grey ECO Blue ECO Brown

Black Graphite Grey Blue Green Yellow Rosso Red

Pattern:

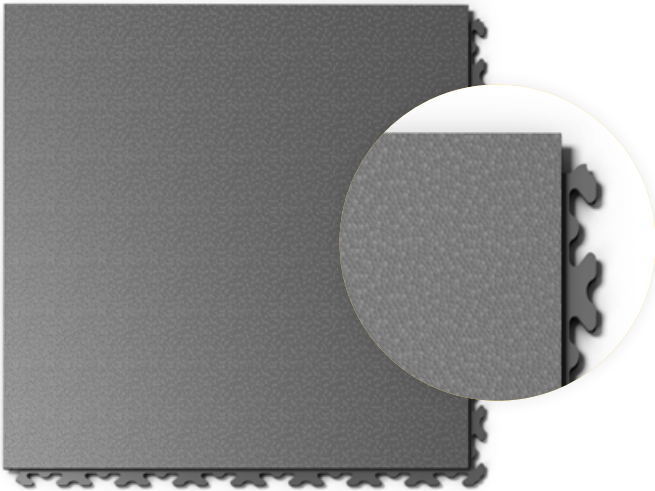
Snake skin

Accessories and service



Invisible

| | |
|-------------|--------------|
| Dimensions: | 468 x 468 mm |
| Thickness: | 6,7 mm |
| Weight: | 1,8 kg |
| Lock: | hidden |



- The **Invisible** line is designed for **commercial, residential, industrial and warehouse spaces**
- Hidden locks (after laying the floor the locks are invisible)
- Unique snakeskin pattern with reflections and easier cleaning
- Easy to combine colours and create corridors, paths and navigation lanes
- Can be assembled in parts without interrupting operation
- Resistance to loads, chemicals and abrasion, thermal and sound insulation
- **Composition:** highly durable homogeneous 100% PVC (100% recyclable)
- It stands out for making the floor easy to clean and maintain
- Available also in ECO variant made out of recycled material
- **Resistant lock system, 12 years warranty, 25 years service life**

Colours:

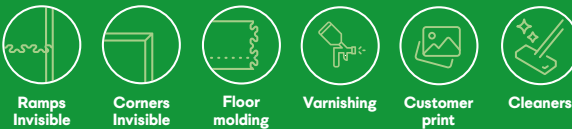
ECO Black ECO Grey ECO Light Grey ECO Blue ECO Brown

Black Graphite Grey Blue Green Yellow Rosso Red

Pattern:

Snake skin

Accessories and service



Business

| | |
|-------------|--------------|
| Dimensions: | 668 x 668 mm |
| Thickness: | 7 mm |
| Weight: | 4,1 kg |
| Lock: | hidden |



- The **Business** line is designed for **representative commercial spaces, gastronomic facilities, commercial establishments and offices**
- It is a unique combination of Fortelock tiles and topnotch products of the world's manufacturers of heavy-duty vinyl floors
- Minimal water permeability thanks to the **patented ZeroGap lock**
- Fast installation without the need to restrict operating hours
- The hidden locks do not disturb the design
- High resistance to wear in commercial spaces, including resistance to the rolling effects of chair casters
- Easy maintenance, surface cleaning and disinfection, anti-allergic environment
- **Durable lock system, warranty up to 12 years**
- You can find a wide range of designs at **www.fortelock.com**

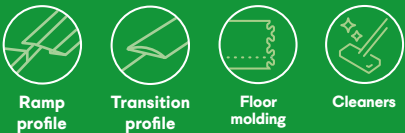
Colours:



Seam:



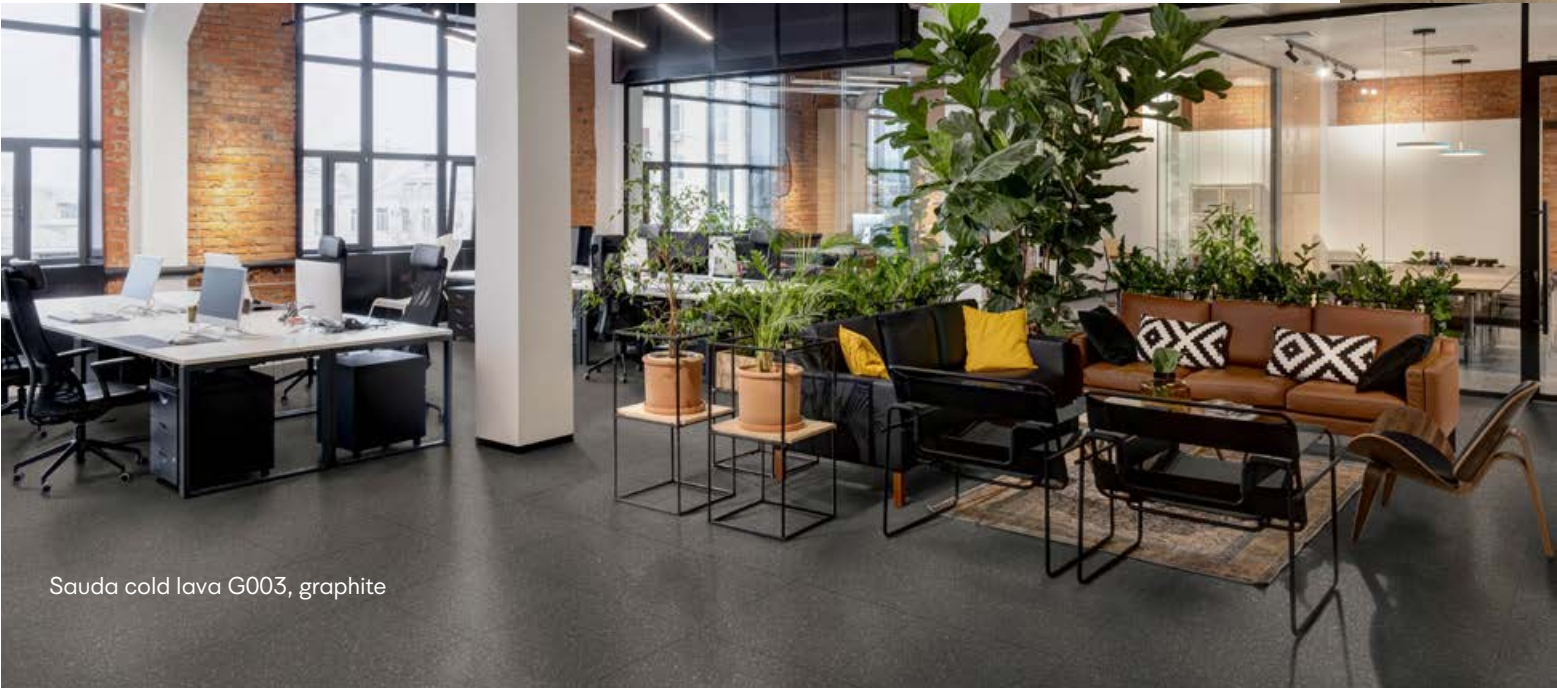
Accessories



Torness full moon C012, graphite



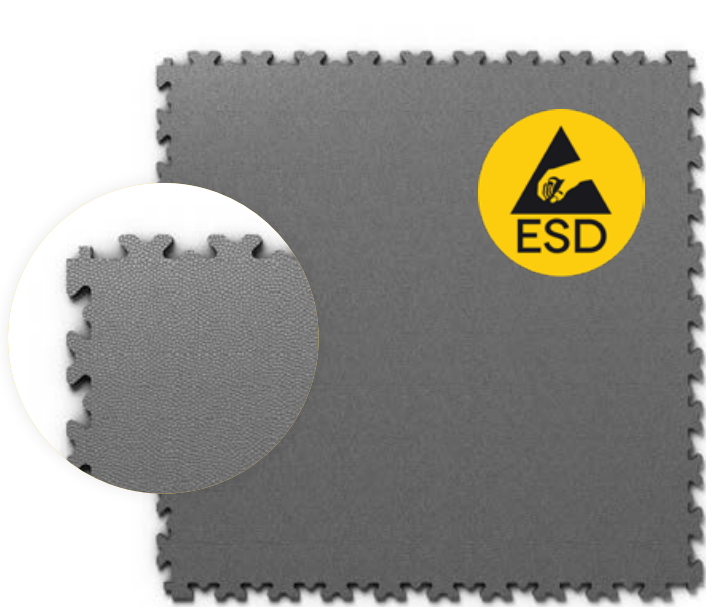
Tyrolean oak W001, graphite



Sauda cold lava G003, graphite

ESD

| | |
|-------------|------------------|
| Dimensions: | 510,5 x 510,5 mm |
| Thickness: | 7 mm |
| Weight: | 2,4 kg |
| Lock: | visible |



- The **ESD** line is designed for **rooms with a requirement for electrostatically conductive floor design**
- Areas of application: **electrical components production areas, automotive industry, areas with risk of explosion, electrical substations, data centres, healthcare laboratories and others**
- Complies with IEC 61340-4-1
- The highest mechanical resistance prevents damage to the surface by handling equipment or massive point loads
- Can be assembled in parts without interrupting operation
- Highly durable homogeneous material
- **Durable interlocking system, 12 years warranty, 25 years service life**
- Use XL ESD if you want a more economical option in heavy foot traffic areas

Colours:

Black

Graphite

Grey

Blue

Green

Pattern:

Skin

Accessories

Ramps ESD

Corners ESD

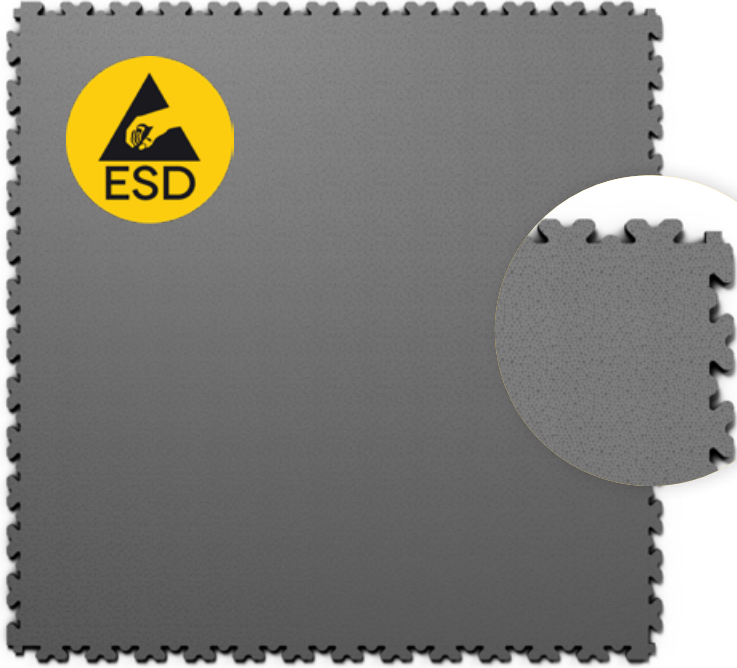
ESD Grounding set and strip

Floor molding

Cleaners

XL ESD

| | |
|-------------|--------------|
| Dimensions: | 653 x 653 mm |
| Thickness: | 4 mm |
| Weight: | 2,4 kg |
| Lock: | visible |



Colours:

Black

Graphite

Grey

Blue

Green

Pattern:

Snake skin

Tip:
For cleaning ESD tiles, use the special product Dr. Schutz ESD Floor Cleaner. It's a concentrate for normal daily cleaning and for cleaning after finishing laying ESD tiles. Developed for all electrostatically conductive and antistatic floors.



Accessories

Ramps XL ESD

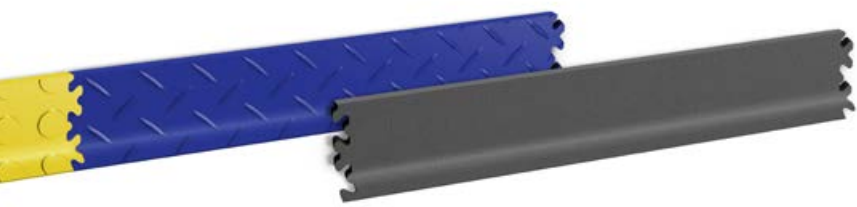
Corners XL ESD

ESD Grounding set and strip

Floor molding

Cleaners

Accessories



Skirting board Industry, Industry Ultra, XL, Invisible

Skirting board for an elegant finish to the floor near walls and other fixed parts. The skirting boards are made of Fortelock tiles, which achieves perfect colour and décor matching.



White



Grey



Black

Tip:

For easier installation, we recommend installing it on a baseboard.

Base skirting board

Plastic strip designed for an elegant finish of the floor covering. Universal strips are provided with double-sided adhesive tape designed to glue part of the tiles. The strip must be glued to the wall with mounting glue under the baseboard.

Dimensions: length 2500 mm, height 58 mm, width 9.7 mm.



Business skirting board

Skirting board for Fortelock Business in colours and decors according to the current offer of the Business collection. Base skirting board included.

Material: plastic.
Length: 2000 mm.

Ramps and corners for Business

Drilled aluminium ramp for an elevation of 8.5-15 mm. Designed for busy places with a heavy-duty loads. Simple and quick assembly. Easy to attach with a screw or glue. Ideal solution for shopping carts, pallet trucks, etc.

Dimensions: length 1350 mm, width 80 mm, height from 8.5 to 15 mm.

Material: aluminium.

Mounting by drilling or gluing.
Screws included.

Transition tile for Business

Dimensions: length 1350 mm, width 32 mm.

Material: aluminium.

Adhesive.



Marking tape

Designed to mark off danger zones, to mark off directions for pedestrians, etc.

Dimensions: width 50 mm, length 33 m.

Colour: yellow, yellow-black.



Rubber hammer

Rubber hammer, wooden handle.

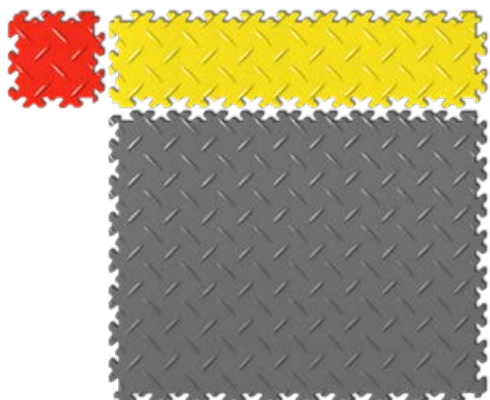


Demarcation Strips – Industry, Industry Ultra, XL

Demarcation strips present a solution for anyone looking for a way to define an area or delineate safety zones and corridors or who simply want to add some flair to a space.

Demarcation strips can be narrow or wide. They come in the form of a basic tile (Industry, Industry Ultra, XL) which makes them combinable with classic tiles any way you can imagine.

Dimensions:
Narrow strip: 114.4 mm wide (net overlap area)
Wide strip: 381.2 mm wide (for Industry and Industry Ultra tiles), 525 mm (for XL tiles); strip length same as tile length.



ESD grounding tape

The width and spacing of the installation are governed by performance standards.

Dimensions: width 70 mm, length as required, thickness 0.1 mm.



ESD grounding kit

It includes a plug with cord (2.4 m) and connection rivet (10.3 mm) in one piece, L-shaped metal grounding element and CU self-adhesive tape, used to stick the grounding element to the grounding tape.

Fixation and bonding



Fixation dispersion under PVC

Water-removable fixation designed for the **removable attachment** of tiles to the floor. It guarantees the stability of tiles for heavy-duty traffic. Easy to remove, saves costs during further renovation.

Packaging:
3 kg (20 m²)
12 kg (80 m²)



Fixing tape

Special transparent colourless adhesive tape for establishing a **removable connection** of tiles with the floor. Firm polyester support for trouble-free application and sure and immediate adhesion.

Dimensions: width 240 mm, length 50 m.



PU adhesive under PVC

Two-component PU glue to **permanently bond** tiles to the floor. Firm, strong and quick-tack adhesive.

Packaging:
3 kg (5-12 m²)
8 kg (13-32 m²)
12 kg (20-48 m²)



Adhesive under the base skirting board

MAMUT GLUE High Tack, white

Packaging: 290 ml.

Cleaners



Forteclean Daily Cleaner

Special active cleaner **for daily use and for use after installation of any untreated elastic flooring** (PVC, linoleum, rubber) or flooring with PU/PUR surface treatment. High cleaning power even on greasy deposits. No fading, no grey stains. Cleaning without residue or streaks. For safe non-slip surfaces. Meets DIN 18032 requirements for sports flooring.

Packaging:
1 l (1 000 m²)
5 l (5 000 m²)



Forteclean Intense Cleaner

Neutral active cleaner **for deep cleaning of elastic flooring** (PVC, linoleum, rubber) and gentle removal of heavy dirt and grease. Ideal for cleaning after installation in both domestic and industrial buildings. Does not damage protective coatings and films. Suitable for all washable surfaces.

Packaging:
1 l (50 m²)
5 l (250 m²)



Dr. Schutz Universal Elatex stain remover

Universal product for **removing water-soluble and water-insoluble stains** such as coca-cola, fruit juices, ketchup, ballpoint pens, marmalade, red wine, coffee, chocolate, chewing gum, shoe cream, nail polish, asphalt, markers, etc. It is particularly suitable for removing rubber scuffing, heel scuffing, and graffiti and waterproof paints.

Packaging: 200 ml



Dr. Schutz ESD floor cleaner

Cleaning concentrate for daily cleaning and also for cleaning after **ESD tile** installation. Developed for all electrostatically conductive and antistatic floors.

Packaging:
10 l (10 000 m²)



Dr. Schutz Secura Hard Protective Laye

Polymer dispersion (wax) with metal mesh elements for the treatment of newly installed floorings in buildings or base-clean them. The floor will be protected, the adhesion of dirt will be reduced and routine cleaning will be greatly simplified.

Packaging:
5 l (100 m²)
10 l (200 m²)



Dr. Schutz PU Anticolor mat

Two-component water-based polyurethane coating. Extremely high cross-linking density and thus increased resistance to coloured substances, plasticizers and chemicals.

Packaging:
1,08 l (11 m²)
6 l (60 m²)



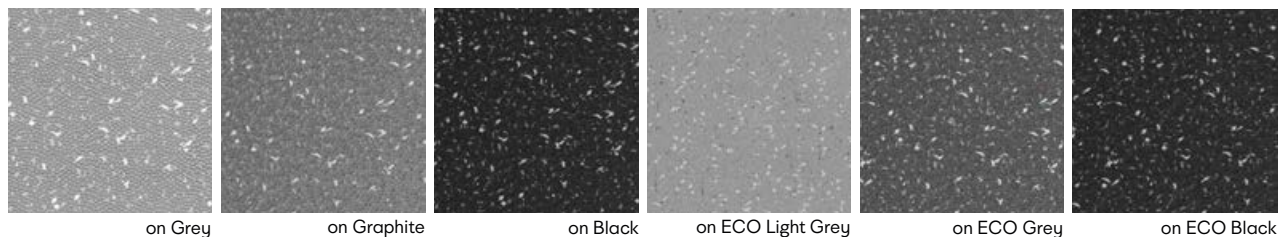
Print GRANIT

The GRANIT collection offers 3 basic patterns of grainy print, which vary in grain size and colour combinations. The seemingly disparate print lets you optically break up the monotonous appearance of a floor which can occur if only one colour is used.

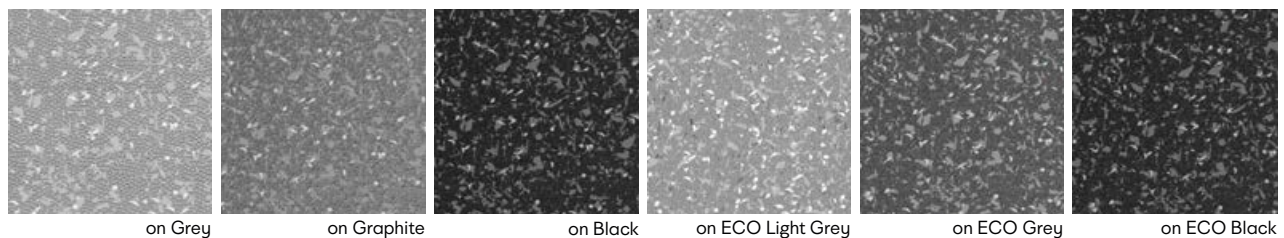
This collection is printed on a modern UV printer and 2x repainted with a UV varnish. The varnish improves the abrasion resistance and the cleanability of the tiles. In addition, thanks to only a partial overlap of the original colour of the base tile any potential scratches are almost invisible.

For print tiles, we recommend using Industry tiles (in leather pattern), Invisible and XL (in snakeskin pattern).

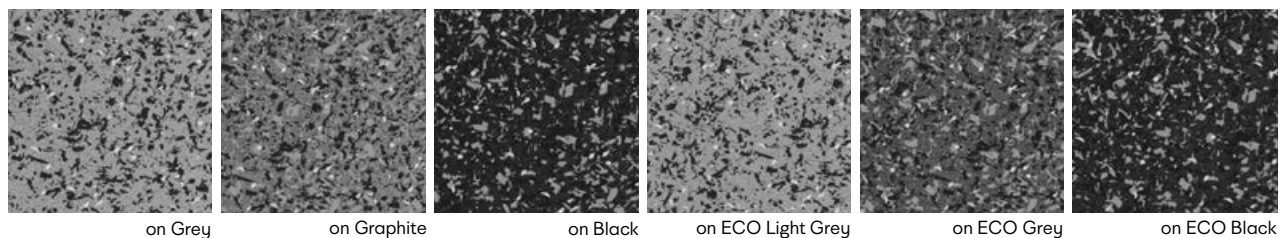
Quartz



Grey



Black



Print CUSTOM

When choosing CUSTOM printing, we will print the tiles according to your wishes and ideas. Just send vector graphic and we'll take care of the rest. We routinely print warning symbols, company logos, direction signs and even family photos onto tiles.

We print with a modern UV printer, then varnish them 2 times with UV varnish. The varnish improves abrasion resistance and improves the cleanability of the tiles.

For print tiles, we recommend using Industry tiles (in leather pattern), Invisible and XL (in snakeskin pattern).



Deep Cleaning, Varnishing

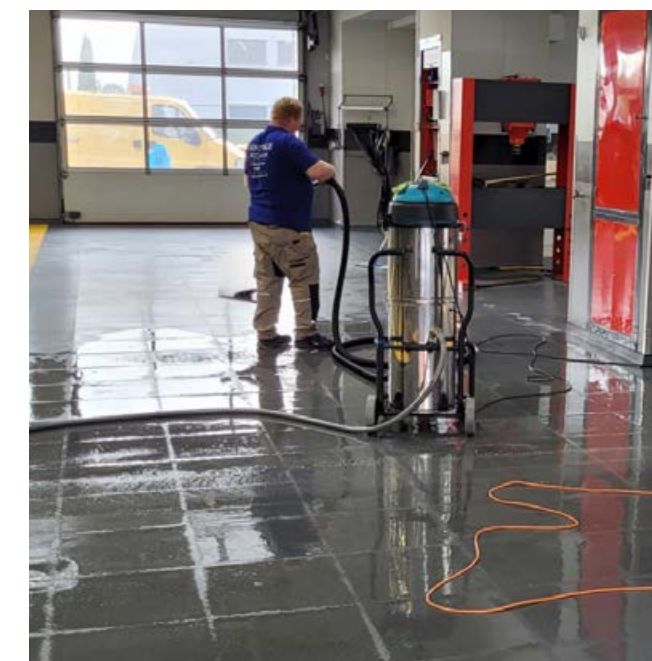
Want your Fortelock tiles to look like new again? Want to make them easier and faster to clean and even more durable? With our cleaning and painting service you get:

- 1. REGULAR GENERAL CLEANING OF PVC** flooring with special cleansers developed in Germany.
- 2. REMOVAL OF OLD DEPOSITS** and soiling and resistant stains.
- 3. CLEANING OF ESD FLOORING** and lacquered floors.
- 4. APPLICATION OF A PROTECTIVE PU LAYER** which will secure the tiles against excessive soilage, make them easier to clean, and increase their mechanical and chemical durability.
- 5. CHANGING TILE COLOURS** if necessary.
- 6. INCREASED SLIP RESISTANCE** for the surface up to R11.

Professional Tile Installation

Can't spare the time or people for floor installation? Lack experienced, thorough, reliable employees who know how to lay tiles in accordance with technical requirements?

We offer floor installation service including cutting, laying skirting boards, transition strips, and any necessary gluing and fixation.





Visualization

Take advantage of the state of the art visualization software and change the floor colour scheme according to you expectation.



Configurator

Enter the desired dimensions of your space, click on the required selection of parameters and you will get the minimum number of tiles required for laying the floor. It couldn't get any easier.

Onsite inspection



We offer expert assessment and proposal of possible solutions for your floor onsite.



Borrow up to 5 m² of tiles to try out

Take advantage of the opportunity to try our tiles for yourself. We will lend you up to 5 m² of tiles for a whole month for FREE. For more information, contact our customer service.



Varnishing

Varnishing will give the floor presentable appearance, increased durability and ease of maintenance. The result is a floor that is beautiful to look at and pleasant to the touch.



Fortelock used tile recycling

Return the tile and we take care of recycling of the waste material and its reuse.

We offer the option to take back the unwanted Fortelock PVC tile as a part of ecological program. Thanks to this service you will save time, worries and money spent on disposal and together we will contribute to the protection of the environment.



ReCreating Building Materials

Fortemix, s.r.o.
Kirilovova 812
739 21 Paskov, CZ

Phone: **+49 152 026 762 55**
E-mail: **info@fortelock.com**
Web: **www.fortelock.com**

