



**Fortelock**

# Business

**Simple  
and Fast**



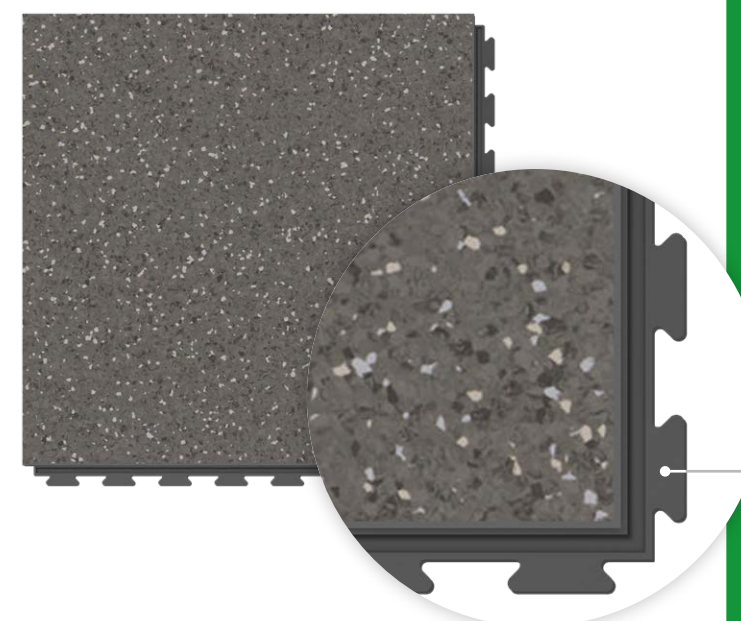




Sauda cold lava G003, graphite

## Fortelock Business Collection

The Business Collection combines the unique properties of Fortelock tiles and topline products of heavy-duty vinyl floor coverings' global manufacturers. A wide selection of designs, ease of installation, minimal water permeability and high durability are just some of the advantages.



The specially developed and patented unique ZeroGap tile lock system guarantees minimum water permeability and it protection against the ingress of dirt. It also guarantees that the tiles easily fit together when laid out and form one compact whole.



# Stock decors

The large selection of decors allows you to fine-tune your interior exactly as you wish.



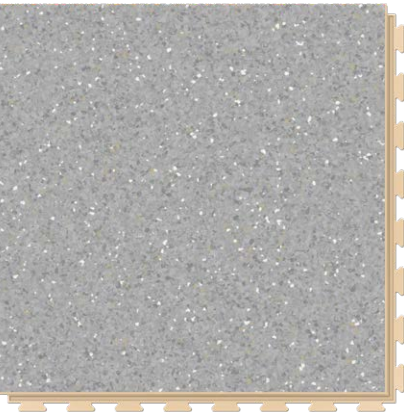
Sauda gold rush G001, beige\*



Sauda gold rush G001, brown\*



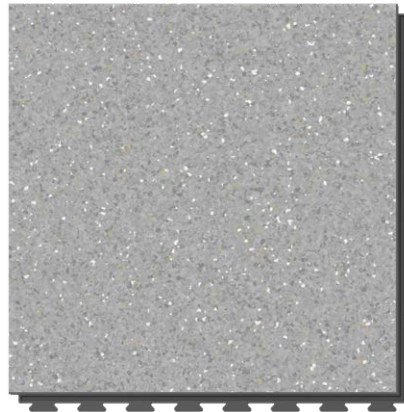
Sauda gold rush G001, graphite\*



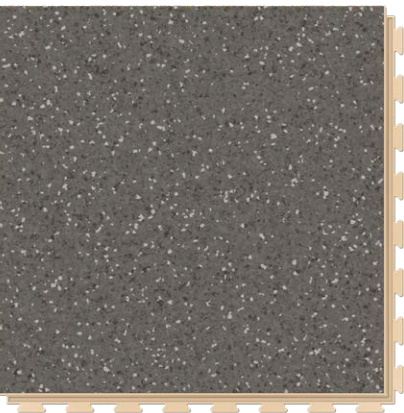
Sauda hidden treasure G002, beige\*



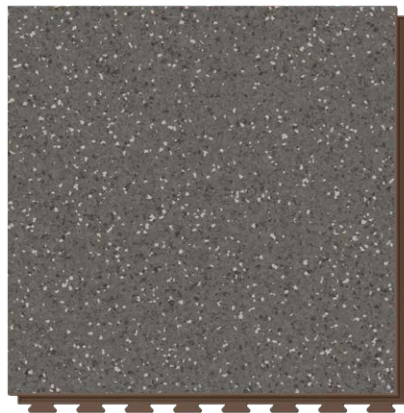
Sauda hidden treasure G002, brown\*



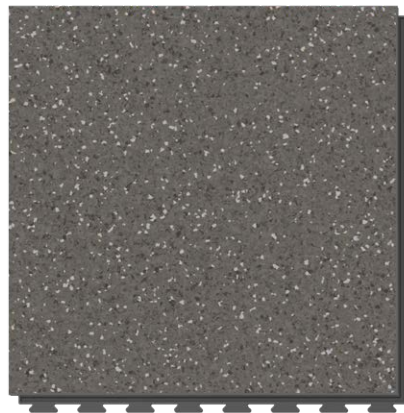
Sauda hidden treasure G002, graphite\*



Sauda cold lava G003, beige\*



Sauda cold lava G003, brown\*



Sauda cold lava G003, graphite\*

\*homogeneous flooring



Tyrolean oak W001, beige



Tyrolean oak W001, brown



Tyrolean oak W001, graphite



Scandinavian oak W002, beige



Scandinavian oak W002, brown



Scandinavian oak W002, graphite



Forsen dark sky C019, beige



Forsen dark sky C019, brown



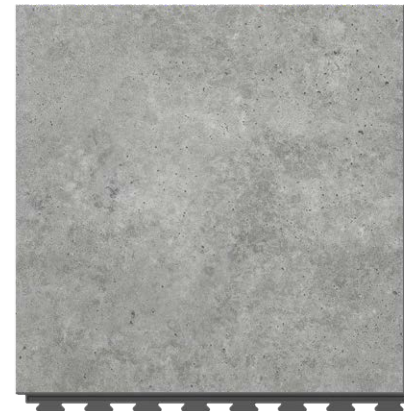
Forsen dark sky C019, graphite



Tornes full moon C012, beige



Tornes full moon C012, brown



Tornes full moon C012, graphite





Scandinavian oak W002, graphite



Forsen dark sky C019, graphite

## WHY BUSINESS?

- Minimal water permeability and protection against the ingress of dirt thanks to the patented ZeroGap lock
- Significantly faster installation compared to conventional floor coverings
- Wide selection of designs and combinations, including seams
- In case of damage, only the damaged section can be replaced
- The floor can be installed conveniently without the need to restrict operations
- Warranty up to 12 years





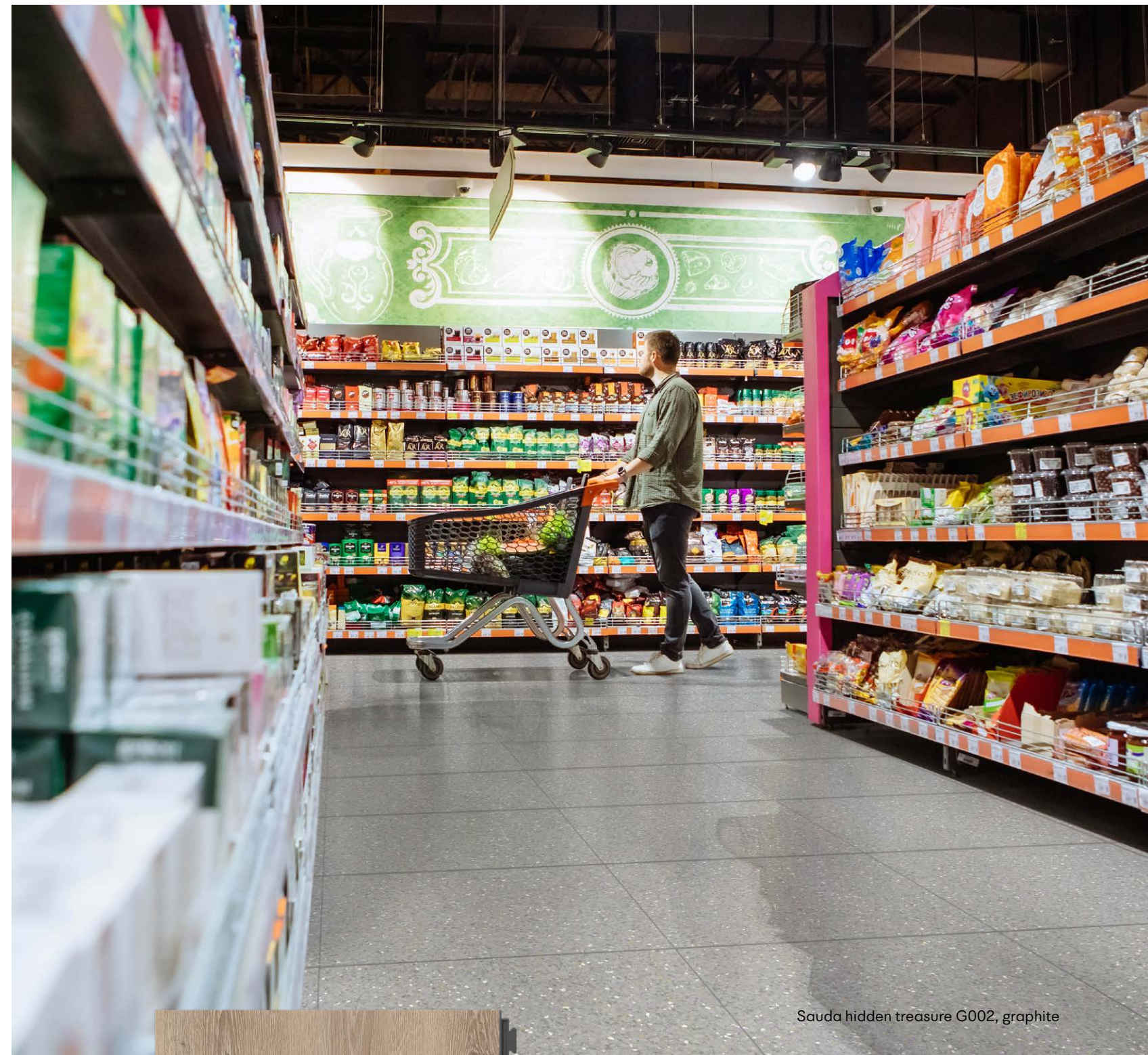
Sauda gold rush G001, graphite

## FAST INSTALLATION

Thanks to the combination of Fortelock tiles and heavy-duty vinyl flooring, the installation is very simple and can be done conveniently while at full operation and without the need for complicated underfloor preparation.







Sauda hidden treasure G002, graphite



The combination of Fortelock tiles and heavy-duty vinyl has another great advantage. In case of damage, only the damaged tile can be replaced without the need to disassemble the floor.





Scandinavian oak W002, graphite



## ACCESSORIES



Ramp  
profile



Base  
board



Transition  
profile

Dimension:	668 x 668 mm
Coverage size:	640 x 640 mm
Thickness:	7 mm*
Weight:	4.1 kg
Lock:	hidden

\*2 mm (homogeneous flooring)

### **Fortemix, s.r.o.**

Kirilovova 812  
739 21 Paskov, CZ

Tel.: +49 152 0267 6255

E-mail: [info@fortelock.com](mailto:info@fortelock.com)

Web: [www.fortelock.com](http://www.fortelock.com)



ReCreating Building Materials

## VARIATIONS:



Viken deep night C001  
(graphite, brown, beige)



Viken harbour grey C002



Viken coal mine C003



Viken ghost buster C004



Viken steam smoke C005

## VARIATIONS:



Tornes mars C006  
(graphite, brown, beige)



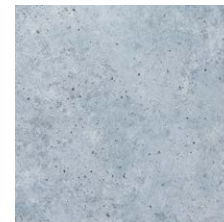
Tornes venus C007



Tornes sun C008



Tornes jupiter C009



Tornes urane C010



Tornes saturn C011



Tornes mercury C013



Tornes pluto C014



Tornes mercury C013, graphite



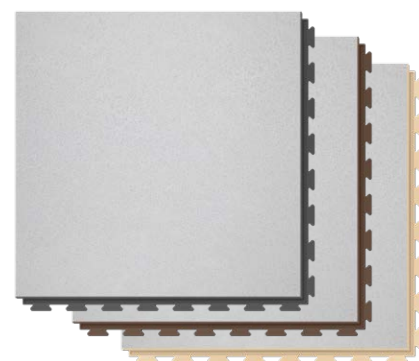


Fonna wooden art warm W003  
(graphite, brown, beige)

VARIATIONS:

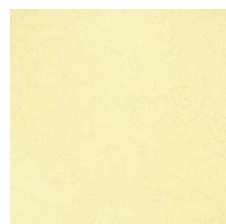


Fonna wooden art cold W004



Takle elephant skin F003  
(graphite, brown, beige)

VARIATIONS:



Takle shiny light F001



Takle holiday blue F002



Takle manhattan bridge F004



Takle sunrise F005



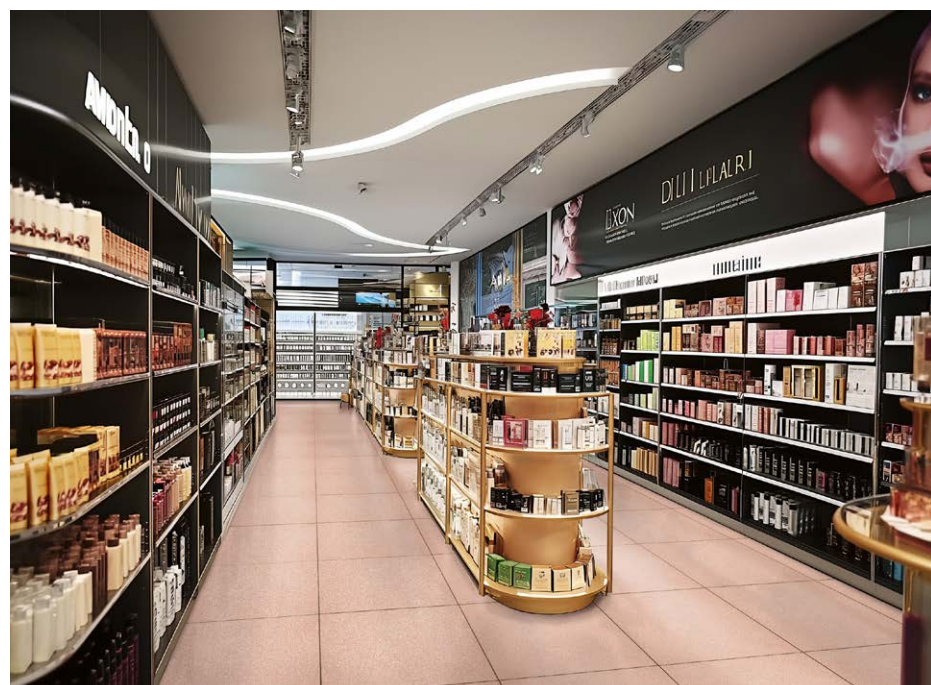
Takle wise nomad F006



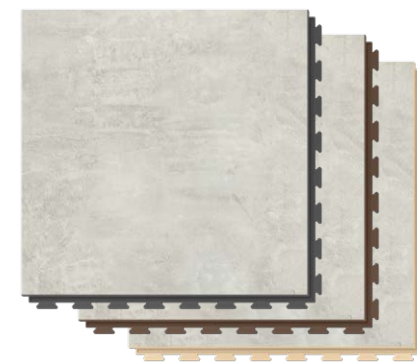
Takle coral bay F007



Takle cold steel F008



Takle coral bay F007, brown



Forsen spring fog C015  
(graphite, brown, beige)

VARIATIONS:



Forsen sea bay C016



Forsen mountain peak C017



Forsen rusty steel C018



Forsen old mine C020



Forsen rugged canyon C021



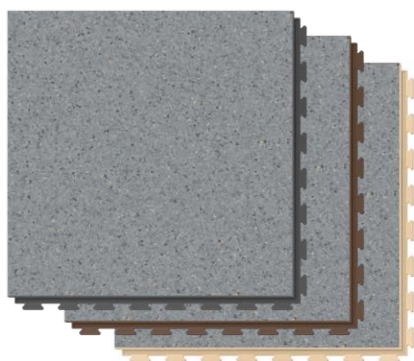
Forsen grey clay C022



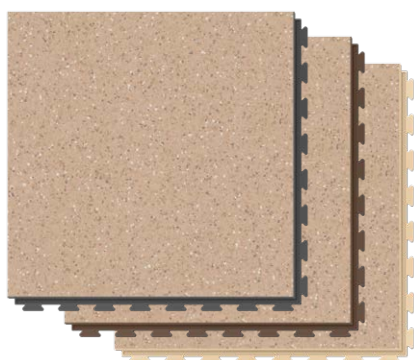
Forsen rugged canyon C021, graphite



VARIATIONS:



Saida dark stone G008\*  
(graphite, brown, beige)



Saida desert sand G006\*  
(graphite, brown, beige)

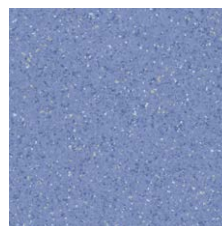
\*homogeneous flooring



Saida lychee G004\*



Saida fresh orange  
G005\*



Saida cold river G007\*



Saida river stone G009\*



Saida summer meadow  
G010\*



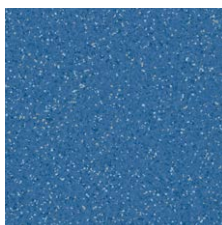
Saida arabian camel  
G011\*



Saida volcano island  
G012\*



Saida cosmic latte  
G013\*



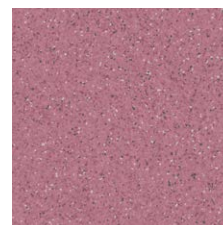
Saida deep ocean  
G014\*



Saida almond butter  
G015\*



Saida walnut seed  
G016\*



Saida beetroot power  
G017\*



Saida wild horse G018\*



Saida irish moss G019\*



Saida arabian camel G011, brown\*